



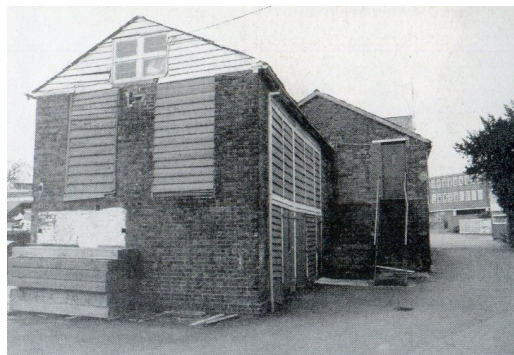
# Your Built Heritage

A workshop to promote  
Local Heritage Lists in Kent  
13 November 2014

# Why a Local List?



Sittingbourne Paper Mill



Ashford Tannery



Blue Boys' Inn, Matfield





# Why a Local List?

## Advantages of listing:

- Public awareness, civic pride
- Recognition by Planning Authority
- Potential for protection via Art 4

# Why a Local List?

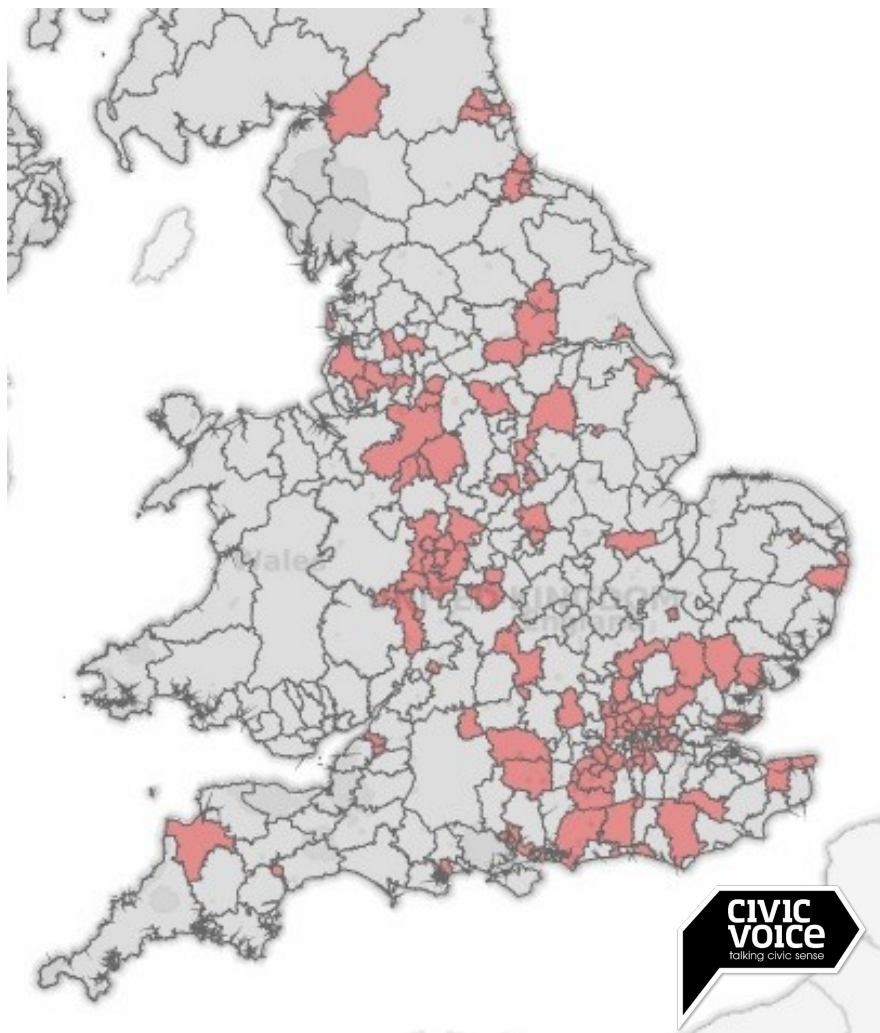
## Protections available for Heritage Assets:

- **Listed Building Consent**
  - Grade I and II\* – referred to SoS
  - Grade II – may be referred to SoS
- **Planning Permission**
  - NPPF – Section 12: Paras 128/9 largely ignored
  - Local Plan Policy, Neighbourhood Plans, SPDs
  - Conservation Areas – for demolition and other issues per Art 4 directions
- **Demolition notice**
  - Needed for all buildings since 2011

# What's happening elsewhere?

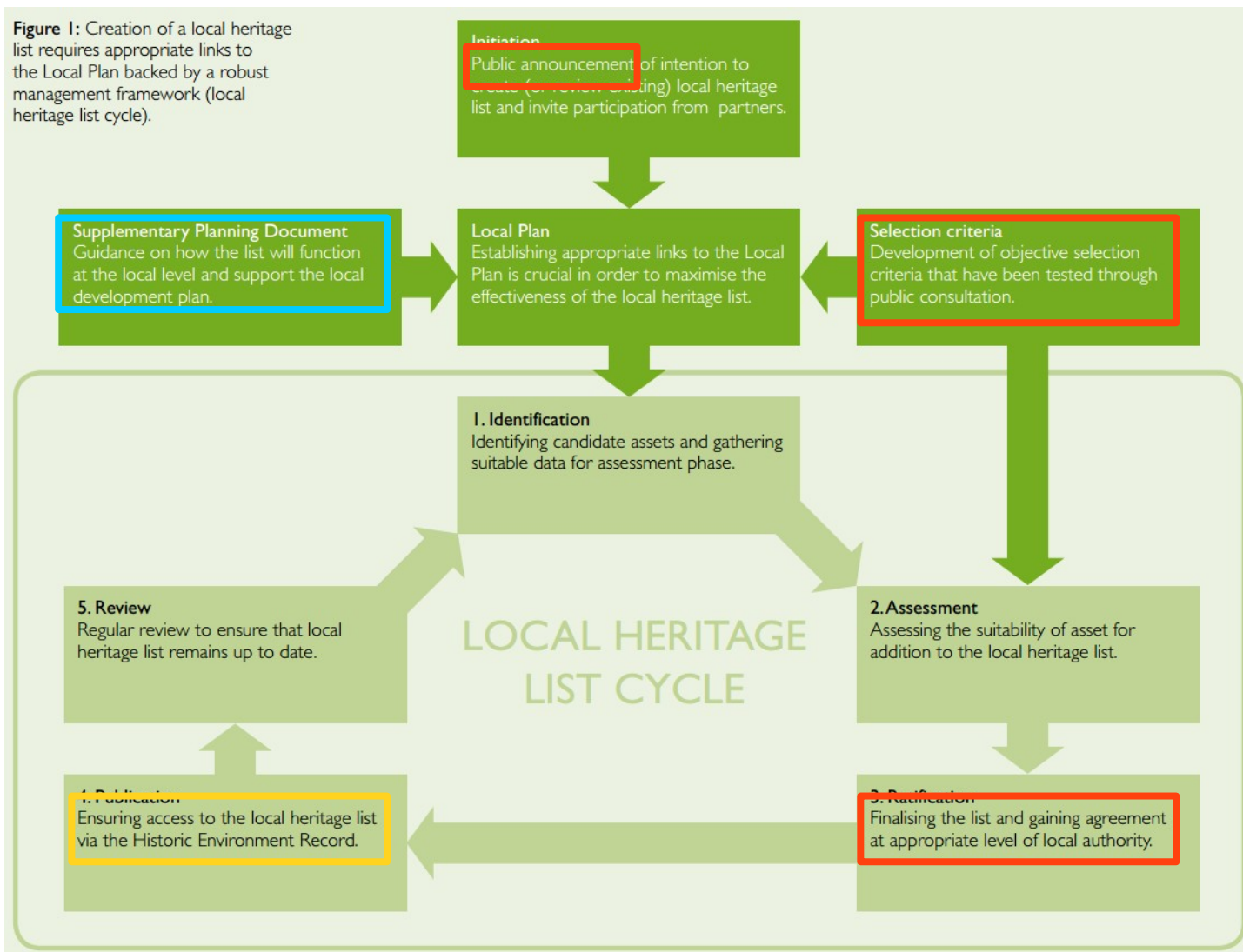
Recent projects:

- Portsmouth Society
- Sid Vale Association
- Blackpool Civic Trust
- Old Hastings Preservation Society
- Camden Civic Society
- Malvern Civic Society
- Friends of Abingdon
- Chester Civic Trust
- Marple Civic Society
- Worcester Civic Society
- Bournemouth Civic Society
- Hackney Society
- Broadland Civic Society
- Rotherham Civic Society
- Braintree Civic Society
- Southgate & District Civic Trust
- Sevenoaks Society

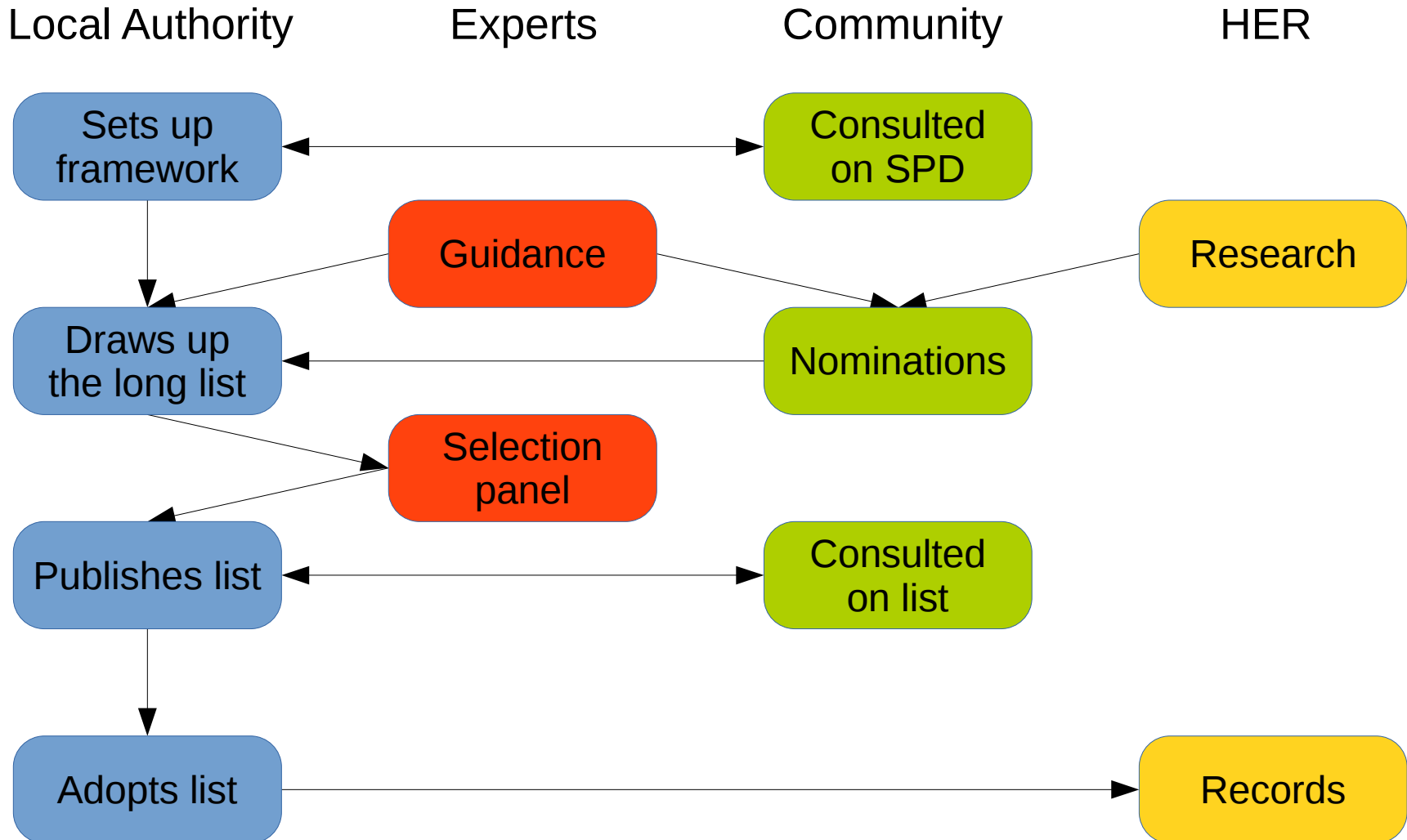


# Local listing procedures

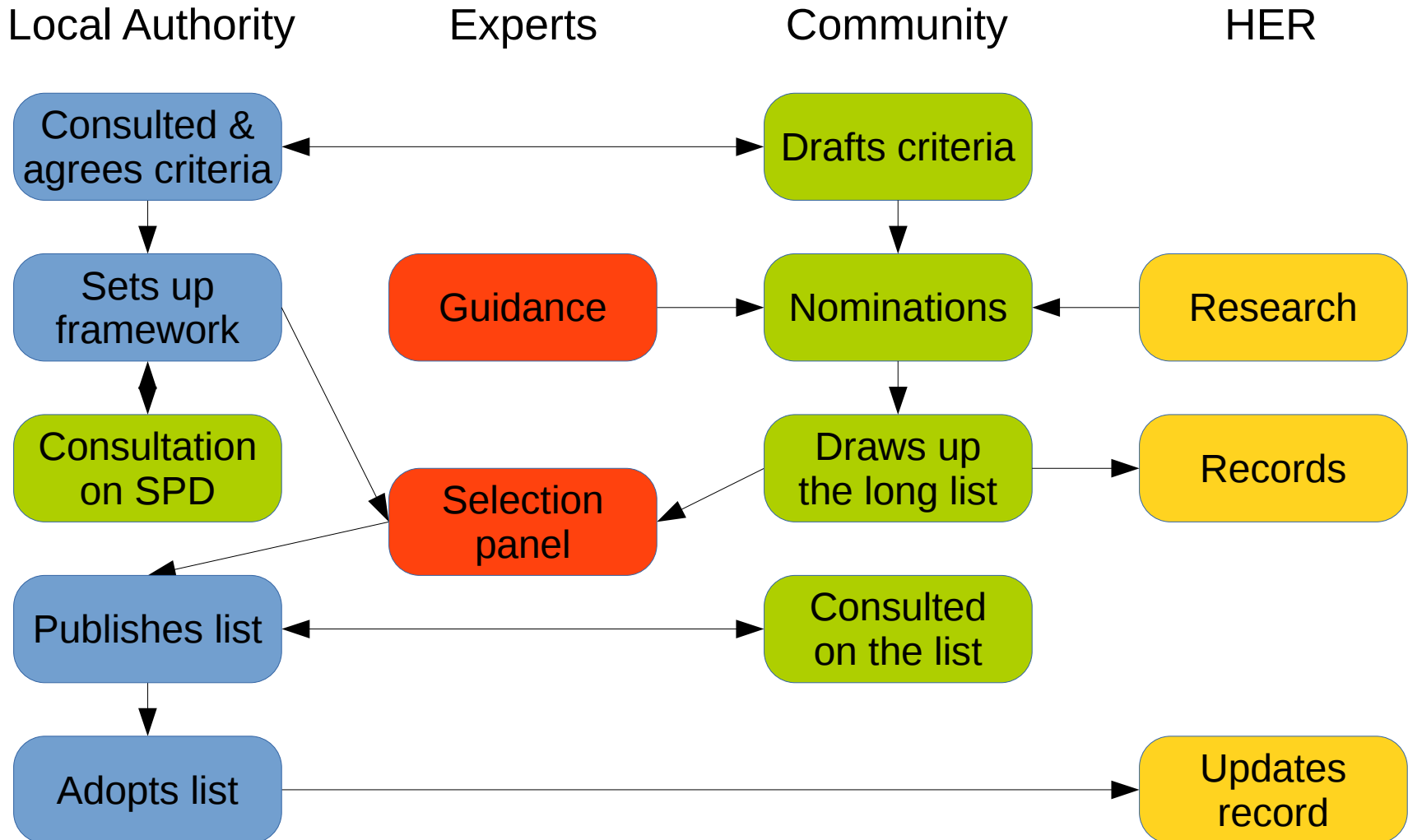
**Figure 1:** Creation of a local heritage list requires appropriate links to the Local Plan backed by a robust management framework (local heritage list cycle).



# Local listing procedures



# Local listing procedures 2



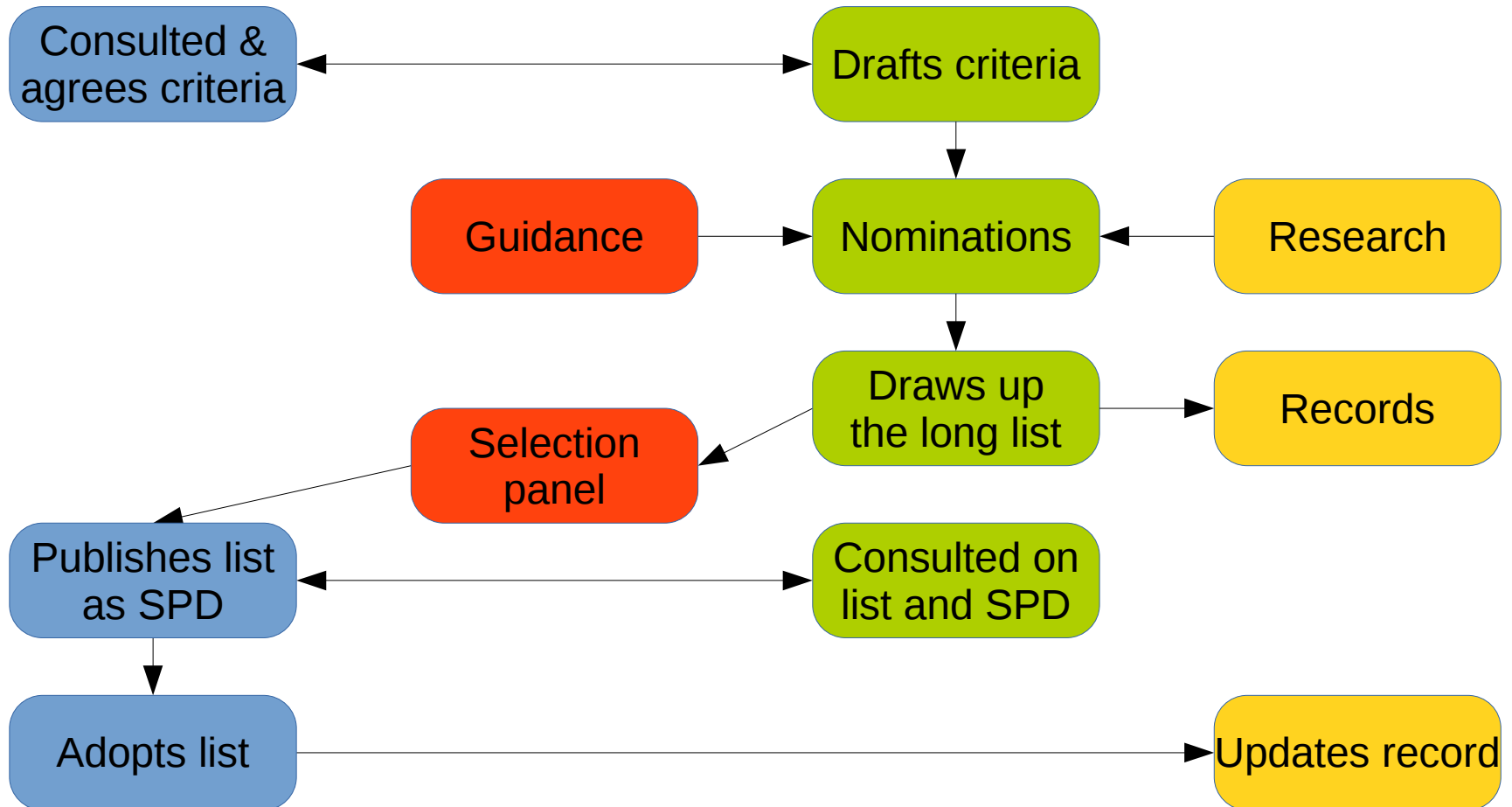
# Local listing procedures 3

Local Authority

Experts

Community

HER





# Considering Candidates

Different approaches:

- One-by-one as for national listing
- By area, town or parish
- By theme, eg “endangered species”
- Whole district or borough

# Sources of Information

## From the EH Local listing Guide Appendix 1:

- Historic Landscape Characterisation Studies
- Historic Town and City Surveys - **old maps**
- Historic Area Assessments
- Defined Area Surveys
- Public Realm Strategies
- Town Plans, Parish Plans and Village Design Statements + **Neighbourhood Plans**
- Townscape and Heritage Appraisals
- Rapid Coastal Zone Assessment Surveys
- Heritage assets recently removed from statutory lists, registers and schedules or those that failed to meet standard for addition – **cf. Sittingbourne Police Station and Court House**
- Management Plans - e.g. those for Conservation Areas or Areas of Outstanding Natural Beauty
- Lists of former Grade III buildings - **“Green Backs” and Kent Historic Buildings Index**
- Typological or thematic studies
- Registers of parks and gardens of local interest maintained by County Garden Trusts, Garden History Society and the Association of Gardens Trusts
- Heritage trails developed by LPA or volunteer organisations
- Historic Environment Records (HER)
- English Heritage Archives
- English Heritage PastScape website
- Secondary sources such as Pevsner Architectural Guides
- **Walking the streets**